

- LEGEND:**
- WATER QUALITY MONITORING STATIONS
- COOLING WATER INTAKES**
- 01 HONG KONG CONVENTION AND EXHIBITION CENTRE EXTENSION
  - 02 TELECOM HONG KONG ACADEMY 1.01 PERFORMING ARTS / SAITLWAY CENTRE
  - 03 HONG KONG CONVENTION AND EXHIBITION CENTRE PHASE 1
  - 04 WAN CHAI TOWER AND GREAT WALL CENTRE
  - 05 SUN HANG KAI CENTRE
  - 06 PROPOSED EXHIBITION STATION / WORLD TRADE CENTRE
  - 07 WINDSOR HOUSE
  - 08 CITY GREEN
  - 09 PROVIDENT CENTRE
  - 102 PROPOSED HERPA EXTENSION
  - 103 SUN HANG KAI CENTRE / REPRODUCTION
  - 107 WINDSOR HOUSE / TEMPORARY REPRODUCTION
- WSD SALT WATER INTAKE**
- #201 WAN CHAI
  - #401 WAN CHAI (REPRODUCTION)
  - #501 CEMILION SQUARE
  - #620 SA BAY
  - #6210 CHA KWO LING
  - #6215 SA BAY ISD
  - #6217 CLARRY BAY
  - #6219 SWING BAY
  - #6220 KENNEDY TOWN

DESIGNATED PROJECT'S TOP	WORK CONTRACT	DESIGNATED PROJECT NUMBER	COMPLETION (APPROXIMATE)
SP1 - CENTRAL WAN CHAI STAFFS WORKS INCLUDING 15 ROAD TUNNEL AND SLOPE ROADS	CEOD CONTRACT NO. HL/2009/01	SP1 - SP3 - SP6	APRIL 2010
SP2 - ROAD P2 AND OTHER ROADS (PRIMARY + DISTRICT DISTRIBUTION ROADS)	CEOD CONTRACT NO. HL/2009/02	SP1 - SP3 - SP5	APRIL 2010
SP3 - PERMANENT AND TEMPORARY ROAD MAINTENANCE WORKS INCLUDING ASSOCIATED DRAINAGE WORKS IN WAN CHAI DEVELOPMENT PHASE 1T - WSD17 AREA	CEOD CONTRACT 3	SP1 - SP3	END 2011
SP4 - TEMPORARY BRIDGE-SHELTER 1 (SP4 NOT TO BE IMPLEMENTED)	CEOD CONTRACT 4	SP1 - SP3	END 2011
SP5 - WAN CHAI EAST SEWAGE DUTY ALL	CEOD CONTRACT 5	SP3	2010
SP6 - DISCREET FOR THE CROSS-HARBOUR WATER MAINS	HYD CONTRACT NO. HY/2009/11	SP3	18 AUGUST 2010
	HYD CONTRACT NO. HY/2009/15	SP1 - SP3	SEPTEMBER 2010
	HYD CONTRACT NO. HY/2009/16	SP1	OCTOBER 2010
	HYD CONTRACT NO. HY/2009/18	SP1	NOVEMBER 2010
	HYD CONTRACT 12	SP1 - SP3	MID 2010



**CEOD** 土木工程發展局  
Civil Engineering and Development Department

**WAN CHAI DEVELOPMENT PHASE II**

WAN CHAI DEVELOPMENT PHASE II, PHASE CENTRE - SANITARY FITTINGS REVISIONS AND TESTING WORKS (STAGE 1)

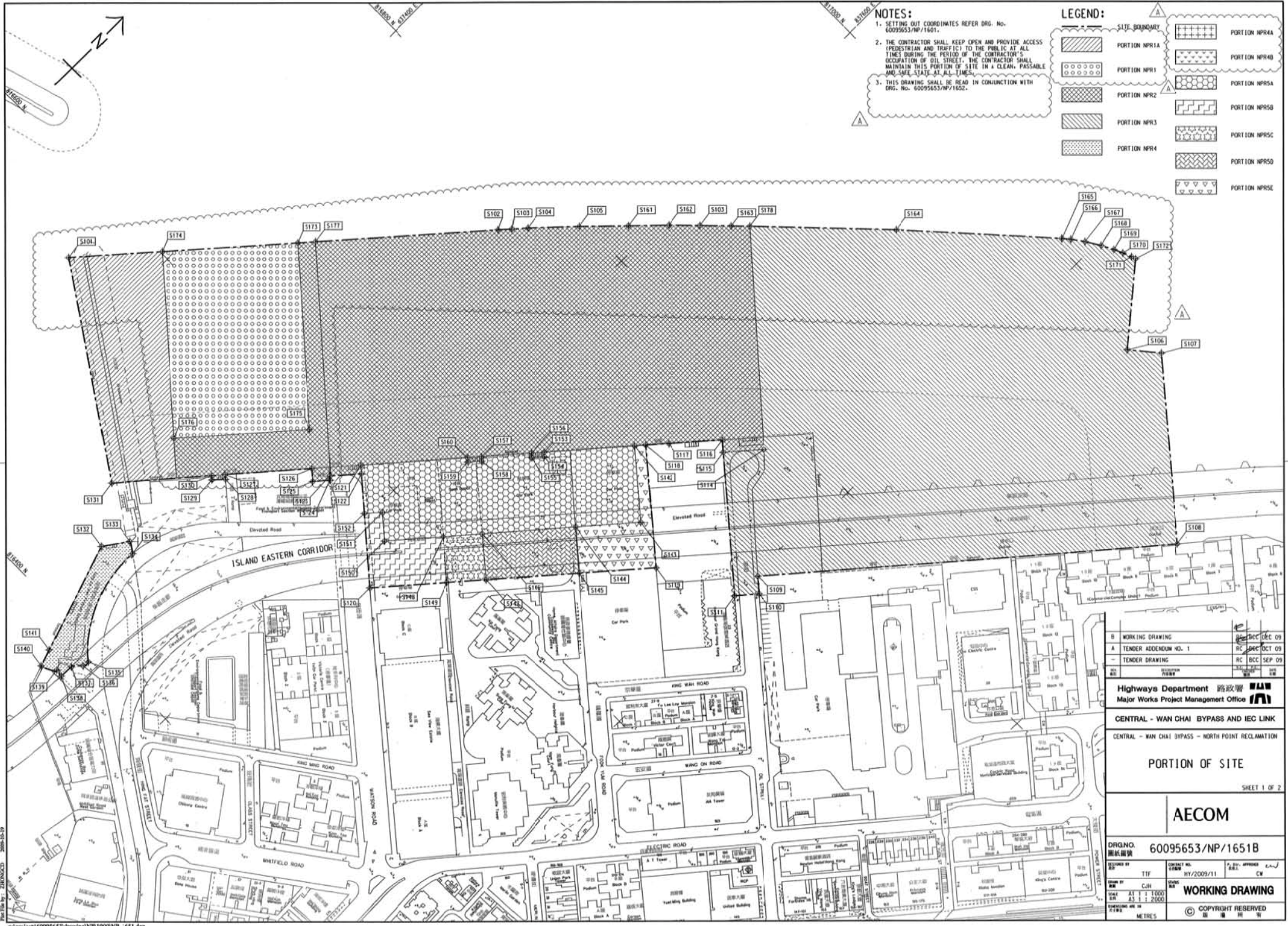
**LOCATIONS OF WATER QUALITY MONITORING STATIONS**

**AECOM**

PROJECT NUMBER: **60041297/C5/SK001**

DATE: 2010	SCALE: 1:10000	DATE: 2010	SCALE: 1:10000
BY: [Signature]	BY: [Signature]	BY: [Signature]	BY: [Signature]
CHECKED: [Signature]	CHECKED: [Signature]	CHECKED: [Signature]	CHECKED: [Signature]

© COPYRIGHT RESERVED



- NOTES:**
1. SETTING OUT COORDINATES REFER DRG. No. 60095653/NP/1601.
  2. THE CONTRACTOR SHALL KEEP OPEN AND PROVIDE ACCESS (PEDESTRIAN AND TRAFFIC) TO THE PUBLIC AT ALL TIMES DURING THE PERIOD OF THE CONTRACTOR'S OCCUPATION OF OIL STREET. THE CONTRACTOR SHALL MAINTAIN THIS PORTION OF SITE IN A CLEAN, PASSABLE AND SAFE STATE AT ALL TIMES.
  3. THIS DRAWING SHALL BE READ IN CONJUNCTION WITH DRG. No. 60095653/NP/1652.

**LEGEND:**

[Dotted pattern]	PORTION NPR1	[Cross-hatch pattern]	PORTION NPR4
[Diagonal lines /]	PORTION NPR2	[Diagonal lines \]	PORTION NPR5
[Diagonal lines /]	PORTION NPR3	[Diagonal lines \]	PORTION NPR6
[Dotted pattern]	PORTION NPR4	[Diagonal lines /]	PORTION NPR7
[Diagonal lines /]	PORTION NPR1A	[Diagonal lines \]	PORTION NPR8
[Diagonal lines /]	PORTION NPR1A	[Diagonal lines \]	PORTION NPR9
[Diagonal lines /]	PORTION NPR1A	[Diagonal lines \]	PORTION NPR10
[Diagonal lines /]	PORTION NPR1A	[Diagonal lines \]	PORTION NPR11
[Diagonal lines /]	PORTION NPR1A	[Diagonal lines \]	PORTION NPR12
[Diagonal lines /]	PORTION NPR1A	[Diagonal lines \]	PORTION NPR13
[Diagonal lines /]	PORTION NPR1A	[Diagonal lines \]	PORTION NPR14
[Diagonal lines /]	PORTION NPR1A	[Diagonal lines \]	PORTION NPR15
[Diagonal lines /]	PORTION NPR1A	[Diagonal lines \]	PORTION NPR16
[Diagonal lines /]	PORTION NPR1A	[Diagonal lines \]	PORTION NPR17
[Diagonal lines /]	PORTION NPR1A	[Diagonal lines \]	PORTION NPR18
[Diagonal lines /]	PORTION NPR1A	[Diagonal lines \]	PORTION NPR19
[Diagonal lines /]	PORTION NPR1A	[Diagonal lines \]	PORTION NPR20
[Diagonal lines /]	PORTION NPR1A	[Diagonal lines \]	PORTION NPR21
[Diagonal lines /]	PORTION NPR1A	[Diagonal lines \]	PORTION NPR22
[Diagonal lines /]	PORTION NPR1A	[Diagonal lines \]	PORTION NPR23
[Diagonal lines /]	PORTION NPR1A	[Diagonal lines \]	PORTION NPR24
[Diagonal lines /]	PORTION NPR1A	[Diagonal lines \]	PORTION NPR25
[Diagonal lines /]	PORTION NPR1A	[Diagonal lines \]	PORTION NPR26
[Diagonal lines /]	PORTION NPR1A	[Diagonal lines \]	PORTION NPR27
[Diagonal lines /]	PORTION NPR1A	[Diagonal lines \]	PORTION NPR28
[Diagonal lines /]	PORTION NPR1A	[Diagonal lines \]	PORTION NPR29
[Diagonal lines /]	PORTION NPR1A	[Diagonal lines \]	PORTION NPR30
[Diagonal lines /]	PORTION NPR1A	[Diagonal lines \]	PORTION NPR31
[Diagonal lines /]	PORTION NPR1A	[Diagonal lines \]	PORTION NPR32
[Diagonal lines /]	PORTION NPR1A	[Diagonal lines \]	PORTION NPR33
[Diagonal lines /]	PORTION NPR1A	[Diagonal lines \]	PORTION NPR34
[Diagonal lines /]	PORTION NPR1A	[Diagonal lines \]	PORTION NPR35
[Diagonal lines /]	PORTION NPR1A	[Diagonal lines \]	PORTION NPR36
[Diagonal lines /]	PORTION NPR1A	[Diagonal lines \]	PORTION NPR37
[Diagonal lines /]	PORTION NPR1A	[Diagonal lines \]	PORTION NPR38
[Diagonal lines /]	PORTION NPR1A	[Diagonal lines \]	PORTION NPR39
[Diagonal lines /]	PORTION NPR1A	[Diagonal lines \]	PORTION NPR40
[Diagonal lines /]	PORTION NPR1A	[Diagonal lines \]	PORTION NPR41
[Diagonal lines /]	PORTION NPR1A	[Diagonal lines \]	PORTION NPR42
[Diagonal lines /]	PORTION NPR1A	[Diagonal lines \]	PORTION NPR43
[Diagonal lines /]	PORTION NPR1A	[Diagonal lines \]	PORTION NPR44
[Diagonal lines /]	PORTION NPR1A	[Diagonal lines \]	PORTION NPR45
[Diagonal lines /]	PORTION NPR1A	[Diagonal lines \]	PORTION NPR46
[Diagonal lines /]	PORTION NPR1A	[Diagonal lines \]	PORTION NPR47
[Diagonal lines /]	PORTION NPR1A	[Diagonal lines \]	PORTION NPR48
[Diagonal lines /]	PORTION NPR1A	[Diagonal lines \]	PORTION NPR49
[Diagonal lines /]	PORTION NPR1A	[Diagonal lines \]	PORTION NPR50
[Diagonal lines /]	PORTION NPR1A	[Diagonal lines \]	PORTION NPR51
[Diagonal lines /]	PORTION NPR1A	[Diagonal lines \]	PORTION NPR52
[Diagonal lines /]	PORTION NPR1A	[Diagonal lines \]	PORTION NPR53
[Diagonal lines /]	PORTION NPR1A	[Diagonal lines \]	PORTION NPR54
[Diagonal lines /]	PORTION NPR1A	[Diagonal lines \]	PORTION NPR55
[Diagonal lines /]	PORTION NPR1A	[Diagonal lines \]	PORTION NPR56
[Diagonal lines /]	PORTION NPR1A	[Diagonal lines \]	PORTION NPR57
[Diagonal lines /]	PORTION NPR1A	[Diagonal lines \]	PORTION NPR58
[Diagonal lines /]	PORTION NPR1A	[Diagonal lines \]	PORTION NPR59
[Diagonal lines /]	PORTION NPR1A	[Diagonal lines \]	PORTION NPR60
[Diagonal lines /]	PORTION NPR1A	[Diagonal lines \]	PORTION NPR61
[Diagonal lines /]	PORTION NPR1A	[Diagonal lines \]	PORTION NPR62
[Diagonal lines /]	PORTION NPR1A	[Diagonal lines \]	PORTION NPR63
[Diagonal lines /]	PORTION NPR1A	[Diagonal lines \]	PORTION NPR64
[Diagonal lines /]	PORTION NPR1A	[Diagonal lines \]	PORTION NPR65
[Diagonal lines /]	PORTION NPR1A	[Diagonal lines \]	PORTION NPR66
[Diagonal lines /]	PORTION NPR1A	[Diagonal lines \]	PORTION NPR67
[Diagonal lines /]	PORTION NPR1A	[Diagonal lines \]	PORTION NPR68
[Diagonal lines /]	PORTION NPR1A	[Diagonal lines \]	PORTION NPR69
[Diagonal lines /]	PORTION NPR1A	[Diagonal lines \]	PORTION NPR70
[Diagonal lines /]	PORTION NPR1A	[Diagonal lines \]	PORTION NPR71
[Diagonal lines /]	PORTION NPR1A	[Diagonal lines \]	PORTION NPR72
[Diagonal lines /]	PORTION NPR1A	[Diagonal lines \]	PORTION NPR73
[Diagonal lines /]	PORTION NPR1A	[Diagonal lines \]	PORTION NPR74
[Diagonal lines /]	PORTION NPR1A	[Diagonal lines \]	PORTION NPR75
[Diagonal lines /]	PORTION NPR1A	[Diagonal lines \]	PORTION NPR76
[Diagonal lines /]	PORTION NPR1A	[Diagonal lines \]	PORTION NPR77
[Diagonal lines /]	PORTION NPR1A	[Diagonal lines \]	PORTION NPR78
[Diagonal lines /]	PORTION NPR1A	[Diagonal lines \]	PORTION NPR79
[Diagonal lines /]	PORTION NPR1A	[Diagonal lines \]	PORTION NPR80
[Diagonal lines /]	PORTION NPR1A	[Diagonal lines \]	PORTION NPR81
[Diagonal lines /]	PORTION NPR1A	[Diagonal lines \]	PORTION NPR82
[Diagonal lines /]	PORTION NPR1A	[Diagonal lines \]	PORTION NPR83
[Diagonal lines /]	PORTION NPR1A	[Diagonal lines \]	PORTION NPR84
[Diagonal lines /]	PORTION NPR1A	[Diagonal lines \]	PORTION NPR85
[Diagonal lines /]	PORTION NPR1A	[Diagonal lines \]	PORTION NPR86
[Diagonal lines /]	PORTION NPR1A	[Diagonal lines \]	PORTION NPR87
[Diagonal lines /]	PORTION NPR1A	[Diagonal lines \]	PORTION NPR88
[Diagonal lines /]	PORTION NPR1A	[Diagonal lines \]	PORTION NPR89
[Diagonal lines /]	PORTION NPR1A	[Diagonal lines \]	PORTION NPR90
[Diagonal lines /]	PORTION NPR1A	[Diagonal lines \]	PORTION NPR91
[Diagonal lines /]	PORTION NPR1A	[Diagonal lines \]	PORTION NPR92
[Diagonal lines /]	PORTION NPR1A	[Diagonal lines \]	PORTION NPR93
[Diagonal lines /]	PORTION NPR1A	[Diagonal lines \]	PORTION NPR94
[Diagonal lines /]	PORTION NPR1A	[Diagonal lines \]	PORTION NPR95
[Diagonal lines /]	PORTION NPR1A	[Diagonal lines \]	PORTION NPR96
[Diagonal lines /]	PORTION NPR1A	[Diagonal lines \]	PORTION NPR97
[Diagonal lines /]	PORTION NPR1A	[Diagonal lines \]	PORTION NPR98
[Diagonal lines /]	PORTION NPR1A	[Diagonal lines \]	PORTION NPR99
[Diagonal lines /]	PORTION NPR1A	[Diagonal lines \]	PORTION NPR100

B	WORKING DRAWING	DEC 09
A	TENDER ADDENDUM NO. 1	OCT 09
-	TENDER DRAWING	SEP 09

Highways Department 路政署  
Major Works Project Management Office

CENTRAL - WAN CHAI BYPASS AND IEC LINK  
CENTRAL - WAN CHAI BYPASS - NORTH POINT RECLAMATION

PORTION OF SITE  
SHEET 1 OF 2

**AECOM**

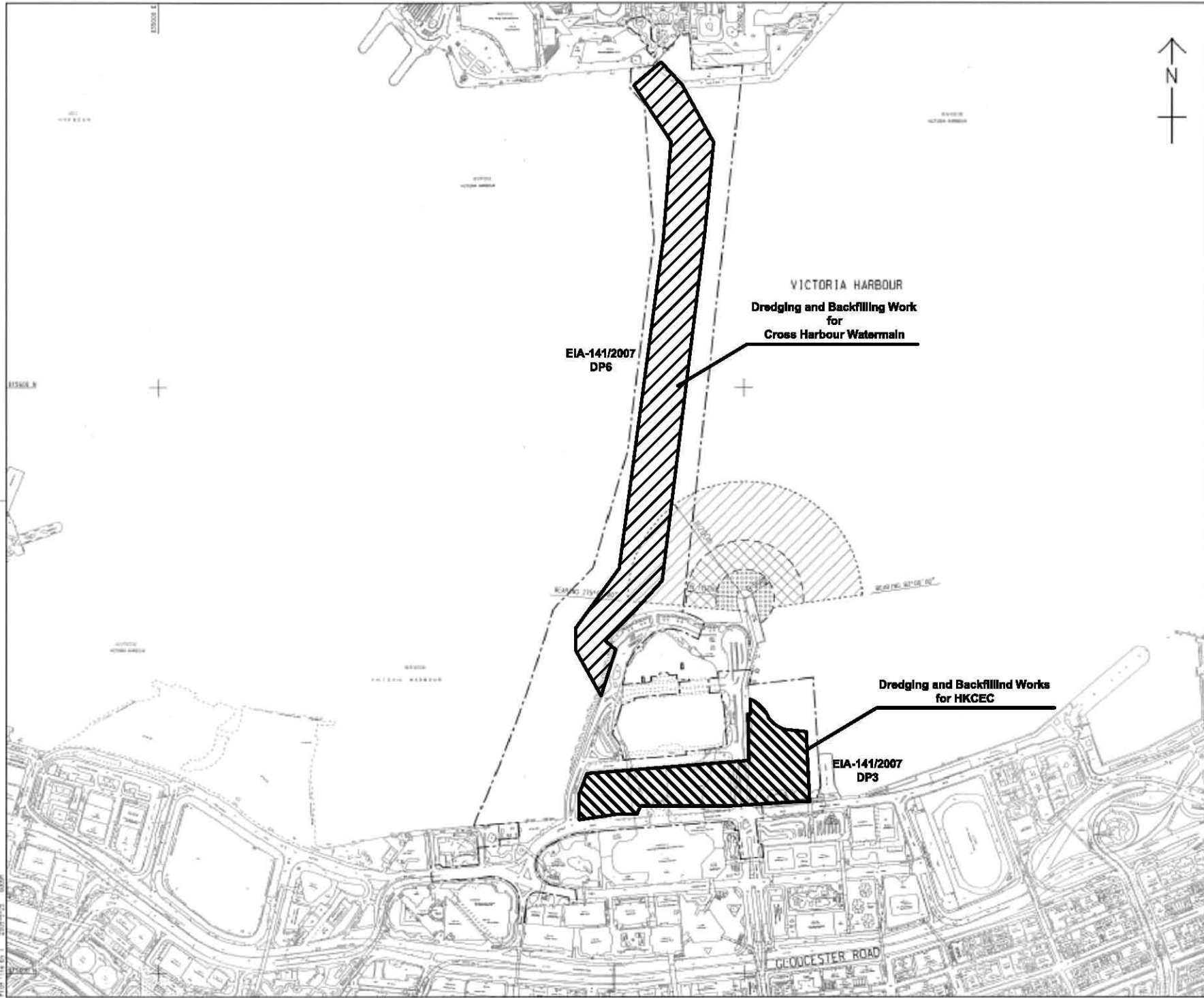
DRG. NO. 60095653/NP/1651B  
圖紙編號

DESIGNED BY	TTF	CHECKED BY	H1/2009/11	DATE	11/2009
DRAWN BY	CJH	APPROVED BY	CW	DATE	11/2009

**WORKING DRAWING**

SCALE: AS SHOWN  
DRAWING NO. 11/2009  
METRES

© COPYRIGHT RESERVED  
圖樣 版權 所有



LOCATION PLAN  
SCALE 1 : 5000

- NOTES:
1. ALL DIMENSIONS ARE IN METRES UNLESS OTHERWISE NOTED.
  2. THE RESTRICTION ZONE IS THIS DRAWING WILL COME INTO EFFECT AFTER THE OPERATION OF THE GOVERNMENT HULLING AT EDP/D/D/E LAST.

LEGEND:

- CONTRACT BOUNDARY
- [Diagonal Hatching] WORKING RESTRICTION ZONE
- [Cross Hatching] NAVIGATION AND WORKING RESTRICTION ZONE
- [Grid Hatching] WORKING BARGE, NAVIGATION AND WORKING RESTRICTION ZONE

TENDER ADDENDUM NO. 4	SEP 25, 2009
TENDER ADDENDUM NO. 1	SEP 25, 2009
TENDER DRAWING	SEP 25, 2009

CEDD 土木工程發展署  
Civil Engineering and Development Department

WAN CHAI DEVELOPMENT PHASE II

WAN CHAI DEVELOPMENT PHASE II -  
KONG KONG CONVENTION AND EXHIBITION CENTRE  
**RESTRICTED ZONE FOR  
CONSTRUCTION VESSELS**  
(Contract no: HK/2009/01)

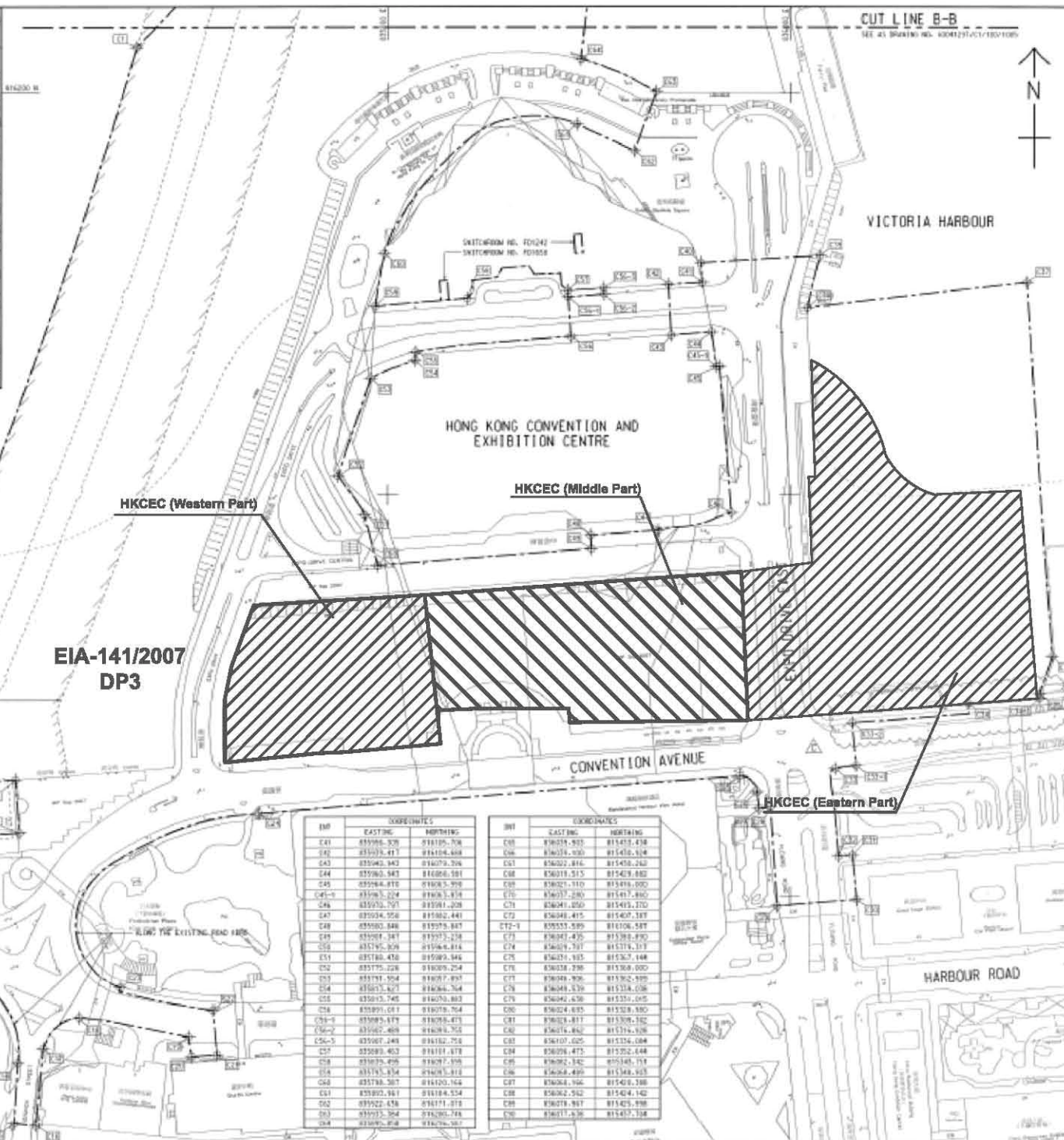
**AECOM**

DRGNO. 圖號	60041297/C1/100/1010B
DATE 日期	16/2009/01
SCALE 比例	AS 1:5000
COPYRIGHT RESERVED	



INSET 'A'  
SCALE 1:1000

CENTRAL DISTRICT



EIA-141/2007  
DP3

HKCEC (Western Part)

HKCEC (Middle Part)

HKCEC (Eastern Part)

INT	COORDINATES	
	EASTING	NORTHING
C41	835986.528	818105.708
C42	835979.417	818104.468
C43	835963.943	818079.706
C44	835963.543	818086.581
C45	835964.818	818085.528
C46	835965.504	818085.514
C46	835955.757	818081.208
C47	835954.956	818082.441
C48	835960.846	818075.887
C49	835961.347	818073.238
C50	835956.828	818066.814
C51	835948.478	818080.846
C52	835975.226	818089.204
C53	835971.504	818077.897
C54	835975.827	818084.764
C55	835973.745	818079.883
C56	835991.071	818078.764
C56-1	835995.679	818078.873
C56-2	835982.468	818078.765
C56-3	835987.248	818182.758
C57	835983.463	818181.878
C58	835978.498	818077.198
C59	835978.574	818081.818
C60	835978.587	818120.164
C61	835990.881	818184.524
C62	835923.434	818171.812
C63	835923.584	818280.788
C64	835923.818	818276.307

INT	COORDINATES	
	EASTING	NORTHING
C65	836028.933	818413.438
C66	836034.000	818413.614
C67	836022.816	818413.240
C68	836019.515	818413.882
C69	836021.110	818414.000
C70	836027.289	818413.880
C71	836041.050	818413.270
C72	836048.415	818407.187
C72-1	835555.589	818106.587
C73	836047.435	818385.890
C74	836049.797	818374.107
C75	836024.185	818382.148
C76	836038.298	818388.000
C77	836048.906	818382.888
C78	836048.439	818374.038
C79	836042.638	818351.015
C80	836024.635	818328.880
C81	836028.417	818308.182
C82	836024.882	818378.148
C83	836107.025	818326.084
C84	836098.473	818322.444
C85	836082.342	818348.714
C86	836084.499	818348.925
C87	836084.196	818348.388
C88	836082.512	818348.142
C89	836078.987	818345.898
C90	836077.638	818347.188

CUT LINE B-B  
SEE AT DRAWING NO. A00025/C1/100/1006



KEY PLAN  
SCALE 1:10000

NOTE:  
1. FOR NOTES & LEGEND, REFER TO DRAWING NO. A00025/C1/100/1006.

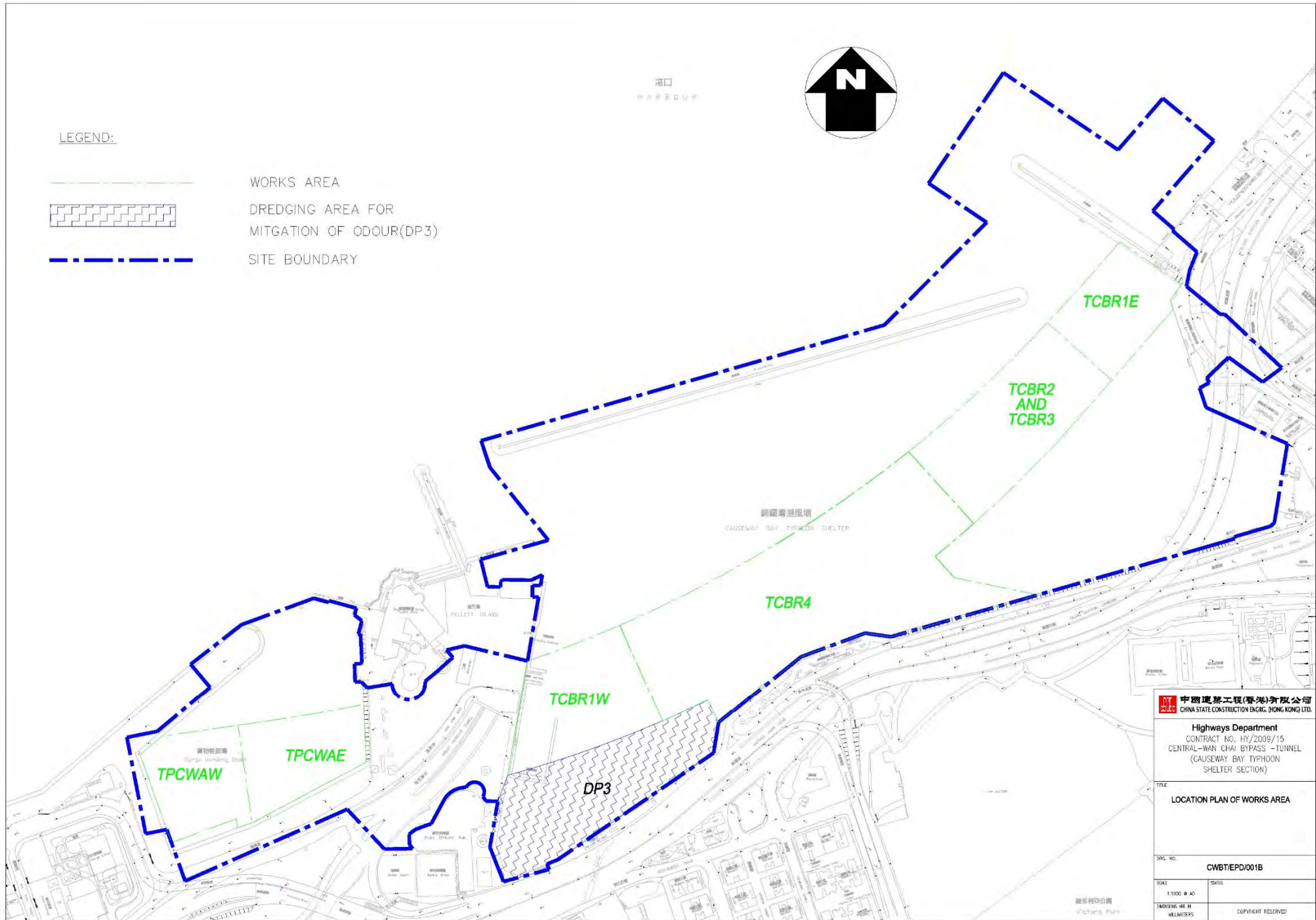
INT	COORDINATES	
	EASTING	NORTHING
C1	836875.285	818222.558
C2	836875.271	818222.299
C3	836874.561	818224.825
C4	836871.020	818231.894
C5	836882.482	818229.522
C6	836881.584	818218.612
C7	836886.545	818215.197
C8	836886.191	818217.147
C9	836886.433	818212.241
C10	836891.082	818207.050
C11	836885.389	818208.075
C12	836877.486	818208.107
C13	836923.468	818204.817
C14	836886.433	818217.122
C15	836874.285	818222.558
C16	836875.195	818222.525
C17	836886.191	818217.147
C18	836886.433	818217.147
C19	836886.433	818217.147
C20	836886.433	818217.147
C21	836886.433	818217.147
C22	836886.433	818217.147
C23	836886.433	818217.147
C24	836886.433	818217.147
C25	836886.433	818217.147
C26	836886.433	818217.147
C27	836886.433	818217.147
C28	836886.433	818217.147
C29	836886.433	818217.147
C30	836886.433	818217.147
C31	836886.433	818217.147
C32	836886.433	818217.147
C33	836886.433	818217.147
C34	836886.433	818217.147
C35	836886.433	818217.147
C36	836886.433	818217.147
C37	836886.433	818217.147
C38	836886.433	818217.147
C39	836886.433	818217.147
C40	836886.433	818217.147

C	TENDER ADDENDUM NO.4	SHEN JYL DEP C8
B	TENDER ADDENDUM NO.2	SHEN JYL DEP C8
A	TENDER ADDENDUM NO.1	SHEN JYL DEP C8
-	TENDER DRAWING	SHEN JYL DEP C8
20	2009	SEP 08


**土木工程發展署**  
 Civil Engineering and Development Department  
**WAN CHAI DEVELOPMENT PHASE II**  
 WAI CHAI DEVELOPMENT PHASE II -  
 CENTRAL AND WEST DISTRICTS  
 HONG KONG CONVENTION AND EXHIBITION CENTRE  
**SITE BOUNDARY SETTING OUT PLAN**  
 (Contract no. HK/2009/01)

**AECOM**  
 DRGNO. 60041297/C1/100/1006C  
 SHEET NO. 1 OF 1  
 DATE: 2009/01/21  
 DRAWN BY: JYL  
 CHECKED BY: JYL  
 SCALE: AS SHOWN  
 COPYRIGHT RESERVED





中國建築工程(香港)有限公司  
CHINA STATE CONSTRUCTION ENG'G. (HONG KONG) LTD.

Highways Department  
CONTRACT NO. HY/2009/15  
CENTRAL-WAN CHAI BYPASS - TUNNEL  
(CAUSEWAY BAY TYPHOON SHELTER SECTION)

TITLE  
LOCATION PLAN OF WORKS AREA

DRG. NO.  
CWBT/EPD/001B

SCALE  
1:1000 @ A0

DATE  
MAY 2010

PROJECT NO.  
HY/2009/15

COPYRIGHT RESERVED

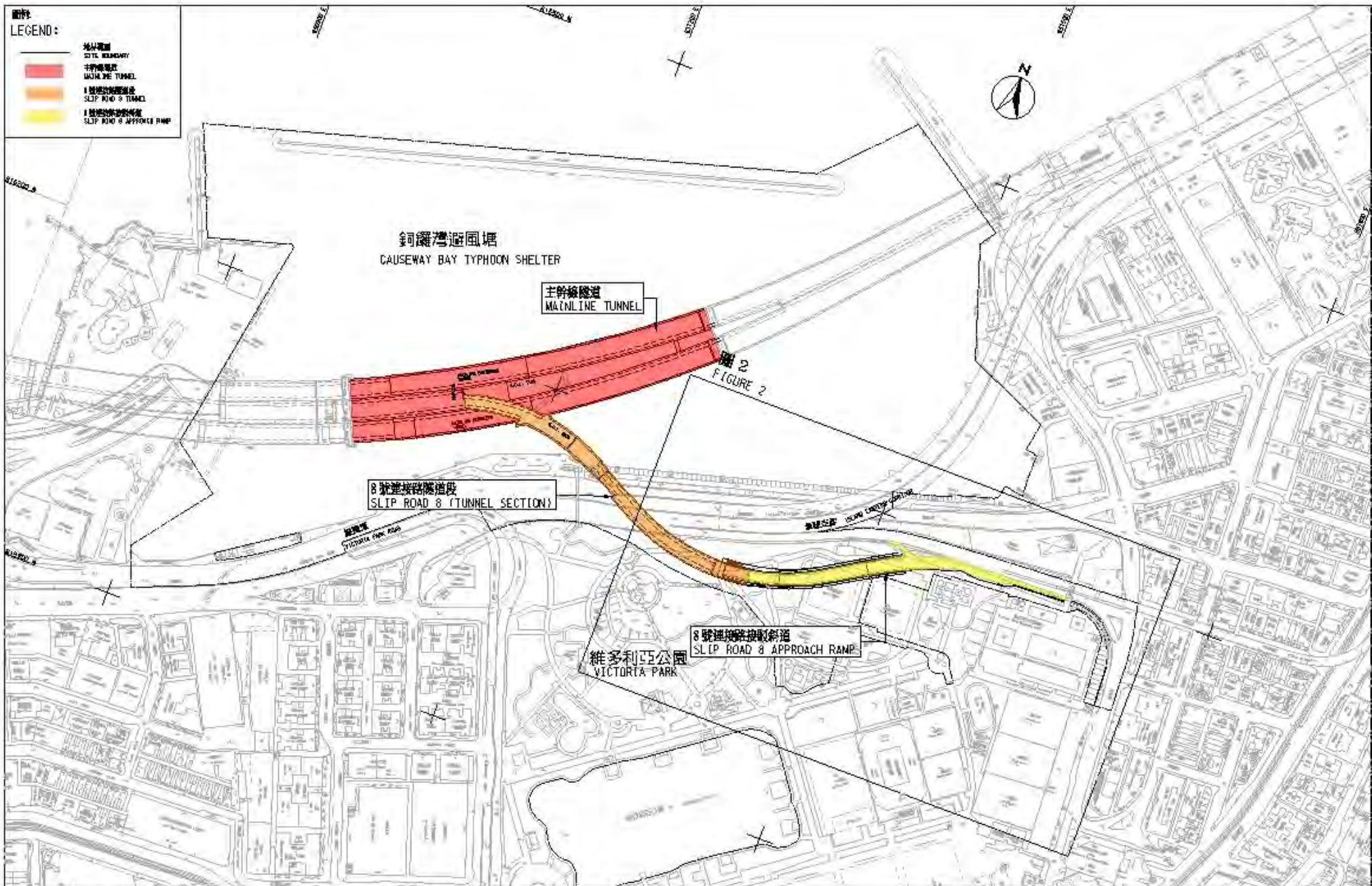
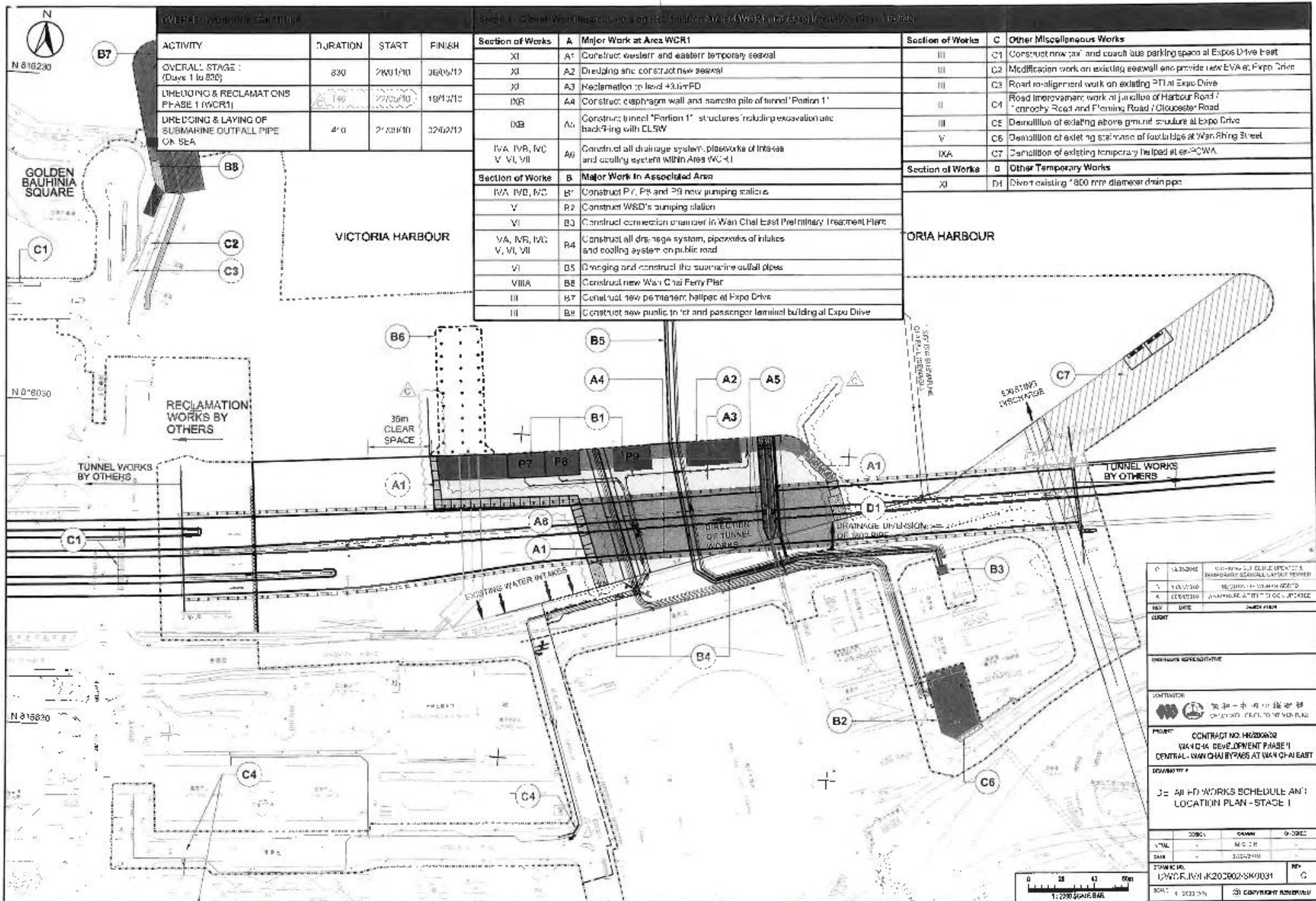


圖 1 - 合約編號 HY/2010/08 中環灣仔繞道-8號連接路段隧道  
 FIGURE 1 - CONTRACT NO. HY/2010/08 - CENTRAL - WAN CHAI BYPASS - TUNNEL (SLIP ROAD 8 SECTION)



OVERALL WORK SCHEDULE

ACTIVITY	DURATION	START	FINISH
OVERALL STAGE I (Days 1 to 830)	830	28/11/10	30/09/12
DECKING & RECLAMATIONS PHASE I (WCR1)	140	22/03/10	18/03/11
DECKING & LAYING OF SUBMARINE OUTFALL PIPE ON SEA	40	27/08/10	30/09/11

Table 1 - Overall Work Schedule on Reclamation Area and WCR1 and Associated Area (Days 1 to 830)

Section of Works	A	Major Work at Area WCR1	Section of Works	C	Other Miscellaneous Works
XI	A1	Construct western and eastern temporary seawall	III	C1	Construct new 'at' and coach bus parking space at Expo Drive East
XI	A2	Dredging and construct new seawall	III	C2	Modification work on existing seawall and provide new EVA at Expo Drive
XI	A3	Reclamation to level +3.5m PD	III	C3	Road re-alignment work on existing PTI at Expo Drive
IXB	A4	Construct diaphragm wall and concrete pile of tunnel 'Portion 1'	II	C4	Road improvement work at junction of Harbour Road / canopy Road and Fleming Road / Gloucester Road
IXB	A5	Construct tunnel 'Portion 1' structures including excavation and backfilling with CLSW	III	C5	Demolition of existing above ground structure at Expo Drive
IYA, IYB, IYC, V, VI, VII	A6	Construct all drainage system, pipeworks of inlets and cooling system within Area WCR1	V	C6	Demolition of existing staircase of footbridge at Wan Chai Street
Section of Works	B	Major Work in Associated Area	IXA	C7	Demolition of existing temporary helped at ex-CWA
IYA, IYB, IYC	B1	Construct P7, P8 and P9 new pumping station	XI	D1	Divert existing 1800 mm diameter drain pipe
V	B2	Construct WSD's pumping station			
VI	B3	Construct connection chamber in Wan Chai East Preliminary Treatment Plant			
IYA, IYB, IYC, V, VI, VII	B4	Construct all drainage system, pipeworks of inlets and cooling system on public road			
VI	B5	Dredging and construct the submarine outfall pipes			
VIII A	B6	Construct new Wan Chai Ferry Pier			
III	B7	Construct new permanent hallpat at Expo Drive			
III	B8	Construct new public toilet and passenger terminal building at Expo Drive			

1. 14/12/09	01-10-2010	01-10-2010	01-10-2010
2. 14/12/09	14/12/09	14/12/09	14/12/09
3. 14/12/09	14/12/09	14/12/09	14/12/09
4. 14/12/09	14/12/09	14/12/09	14/12/09
5. 14/12/09	14/12/09	14/12/09	14/12/09
6. 14/12/09	14/12/09	14/12/09	14/12/09
7. 14/12/09	14/12/09	14/12/09	14/12/09
8. 14/12/09	14/12/09	14/12/09	14/12/09
9. 14/12/09	14/12/09	14/12/09	14/12/09
10. 14/12/09	14/12/09	14/12/09	14/12/09
11. 14/12/09	14/12/09	14/12/09	14/12/09
12. 14/12/09	14/12/09	14/12/09	14/12/09
13. 14/12/09	14/12/09	14/12/09	14/12/09
14. 14/12/09	14/12/09	14/12/09	14/12/09
15. 14/12/09	14/12/09	14/12/09	14/12/09
16. 14/12/09	14/12/09	14/12/09	14/12/09
17. 14/12/09	14/12/09	14/12/09	14/12/09
18. 14/12/09	14/12/09	14/12/09	14/12/09
19. 14/12/09	14/12/09	14/12/09	14/12/09
20. 14/12/09	14/12/09	14/12/09	14/12/09

CONTRACT NO. HZ200802  
 WK14-14 DEVELOPMENT PHASE I  
 CENTRAL-WAN CHAI BYPASS AT WAN CHAI EAST

3 - ALL PD WORKS SCHEDULE AND LOCATION PLAN - STAGE I

SCALE: 1:200 SCALE BAR

...1.1. Extracted from HZ200802 WK14-14 DEVELOPMENT PHASE I - ALL PD WORKS SCHEDULE AND LOCATION PLAN - STAGE I

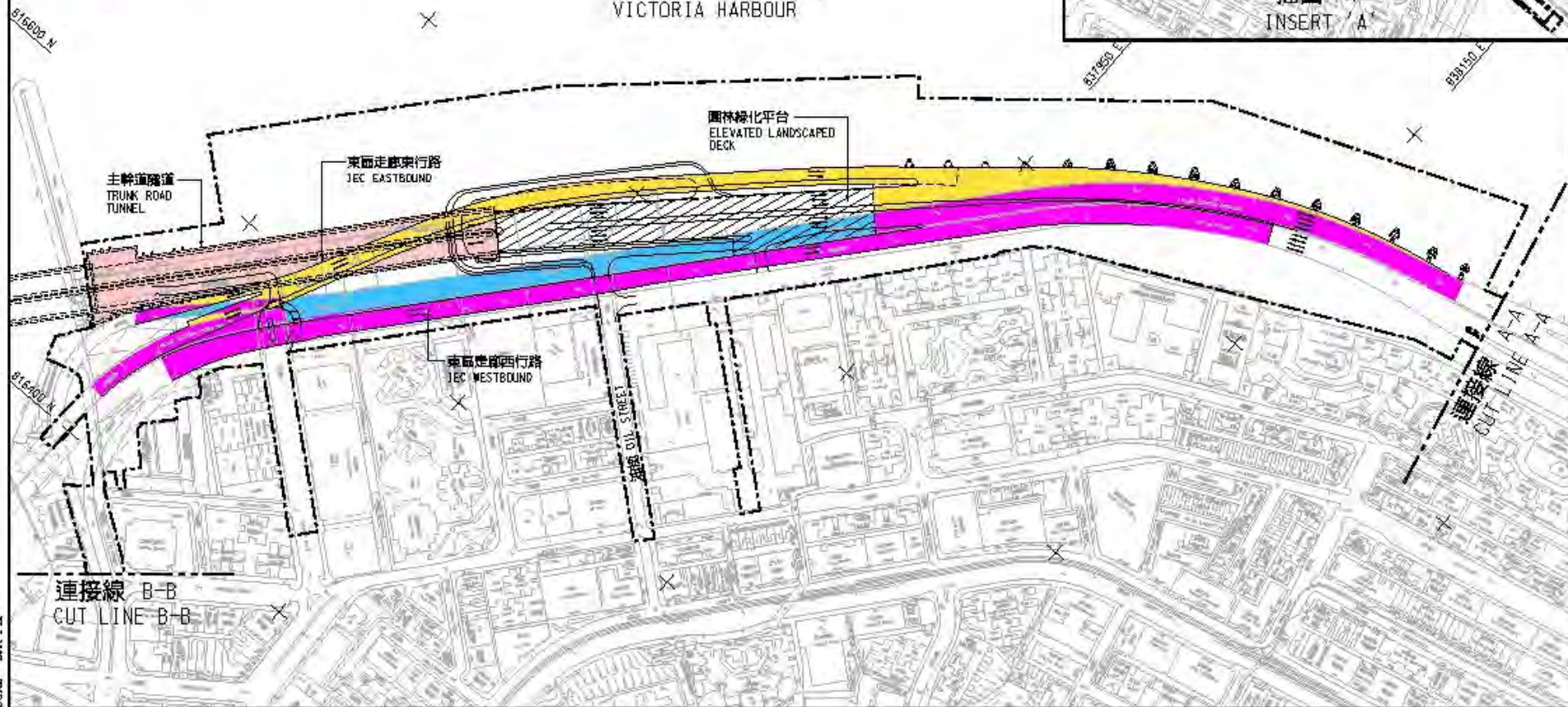
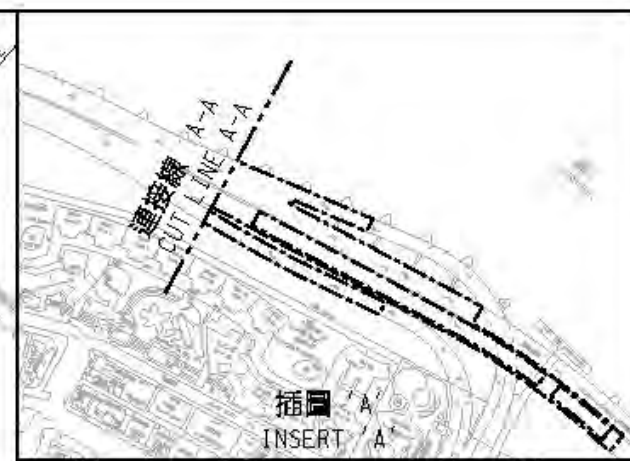


圖例：  
LEGEND:

-  地界範圍  
SITE BOUNDARY
-  園林綠化平台  
LANDSCAPED DECK
-  主幹道隧道  
TRUNK ROAD TUNNEL
-  擬議高架道路  
PROPOSED ELEVATED CARRIAGEWAY
-  現有高架行車道將予拆卸  
EXISTING ELEVATED CARRIAGEWAY TO BE DEMOLISHED
-  現有高架行車道將予拆卸及重建  
EXISTING ELEVATED CARRIAGEWAY TO BE DEMOLISHED AND RECONSTRUCTED



維多利亞海港  
VICTORIA HARBOUR



合約編號 HY/2009/19 - 中環灣仔繞道 - 北角段隧道及東區走廊連接路

CONTRACT NO. HY/2009/19 - CENTRAL-WAN CHAI BYPASS - TUNNEL (NORTH POINT SECTION) AND ISLAND EASTERN CORRIDOR LINK

SCALE 1 : 3000